



Bethlehem Lutheran Church

October 2022 Newsletter

Bethlehem Family and Friends,

In the book of Ecclesiastes, it says “For everything there is a season...” as we transition into a new season, I am mindful that while I enjoy the sunshine and warmth of summer, there is a beauty to be found in fall, and the cooler weather makes me want to get out and enjoy the it while we can. There is, in fact, a beauty in every season...sometimes we just have to look for it more deeply.

In ministry, that is also true, that “for everything there is a season”...we try different forms of ministry; sometimes they work and become part of our dna, our makeup of who we are as a congregation. Other times, they work for a while, and then they need to get put on the shelf for a while until the interest or passion for them returns. Still other times, they don’t work at all, and we learn from them and move on. But all of these seasons are a part of our life together, and all of these seasons have a place and beauty all their own.

In the current season at Bethlehem, we are excited that our new Playground is open, and that kids are enjoying it. We hope it will be a place where all children find a welcome during worship. We are exploring a new way of gathering volunteers and taking a break from the All Team system that carried us through pandemic and staff transitions. If you look deeper into this newsletter, you will find a new description of the proposed teams and their first gathering. If you are interested in being a part of a team, we invite you to touch base with their Team Lead and get on board! Or just come to their next scheduled meeting! We would love to have you! We recognize that some of you do not have the time to serve on teams continually, so watch for the monthly listing of projects that the teams are working on...and if something interests you, jump in, if you need a break, take one...and together, our ministry will be stronger with even more of us involved!

However you choose to be involved at Bethlehem this season, we pray that it will be a season that feeds your soul, renews your energy, and encourages you to be who God is calling you to be. Thank you for your partnership through all the seasons!

Your partner on the journey,

Pastor Amy



Do you like to cook?

We have some upcoming opportunities for you!

November 6, we will be hosting our first Treats and Eats. We are inviting students to come down from campus and join us for free dinner and fellowship. **We are looking for folks who might be interested in helping cook, serve, and fellowship with students.**

If you are interested in helping with this event, please call the church office at 319-266-3541 and let them know.

As a part of mid-week Advent worship this year we are hoping to offer soup suppers to those who gather. If you are interested in hosting one of the Wednesday nights, please sign up in the Fellowship Hall on the bulletin board.



**Soup
Supper**

QUARTERLY MEETINGS
= YEAR-LONG
SUCCESS

Our next congregational quarterly meeting will be on Sunday, Nov. 6 following worship (also daylight savings)! Come and join us as we dream about our next year together!



**You've
Got
Mail**

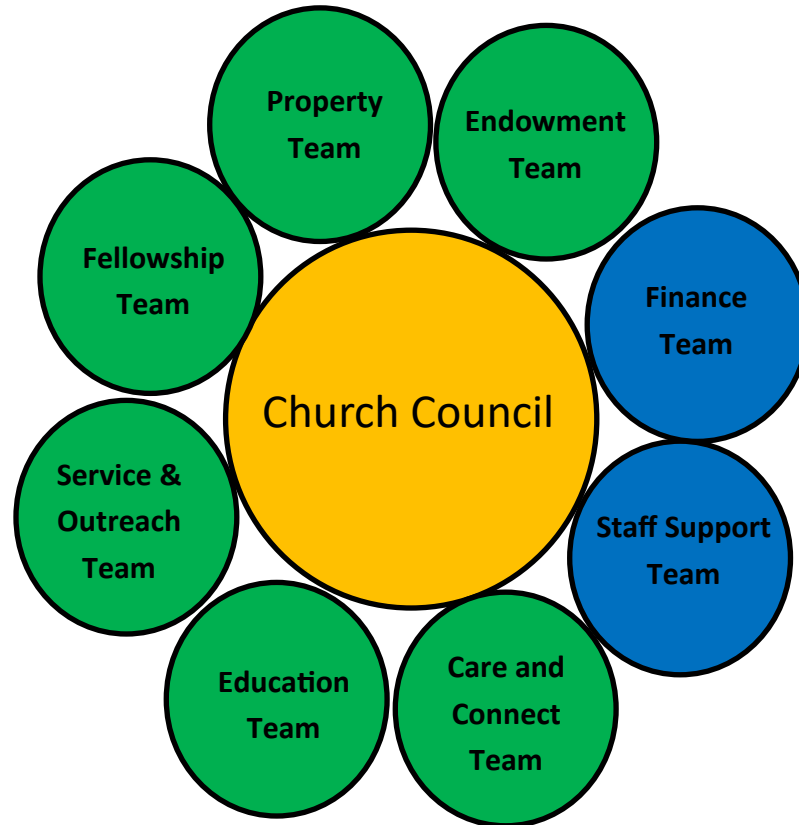
Dear friends,

Thank you so much, for providing all of the drinks for the ThreeHouse Block Party! Thanks especially to Pastor Amy, Jill, and Connie for providing such a warm welcome to the students. We estimate that about 150 people attended the Block Party over the course of the evening. We are looking forward to growing our student community this Fall with a variety of programs, including Game On, Hot Takes, Wednesday Worship, and Coffee House on Thursday evenings. We're planning for a Sacred Spaces retreat in Northeast Iowa in a couple of weeks and will host the Junior High Lock-In at the UNI WRC on October 21st. We'll also continue to take the Treat Trike onto campus. Sharing God's love and acceptance with all continues! We deeply appreciate your generosity and support.

With heartfelt thanks, David Glenn-Burns, Director and Campus Minister

Proposed Team Structure beginning Oct 1

We are thankful that the system of All Team Meeting night has carried us through the staff restructuring and pandemic. As we enter into what is hopefully a more steady season, we would like to try a more specific way of gathering. **The following is the proposal of teams for now through April of 2023.**



In many ways, these teams have been functioning through this season of separation. As we continue to move into more happenings, more people involved, and more ministry, we recognize that we have reached a point where some separate meetings need to occur to involve more people and to get done more of what needs to happen. Therefore, these teams will meet as needed at the direction of their point person. Want to know more about what a team does?

You can talk to...

Property Team-Reed Hunemuller

Fellowship Team-Heather-Hurd Schneider

Service & Outreach Team-Heather-Hurd Schneider

Care & Connect Team-Pastor Amy & Pastor Kristi

Endowment Team-Keith Graber

Education Team-Pastor Amy

Finance Team-Steph Nungesser

Staff Support Team-Pastor Amy

Ways to get involved at Bethlehem in the next few weeks...



We are looking for volunteers for the following things this month:

Work Day-The Property Team is organizing a **Fall Clean Up and Service Day on Saturday, October 15 at 9 am.** If you have some time to give to getting our building ready for the next season, and helping with clean up, please talk to Reed Hunemuller.

Teachers for Sunday School-We are still looking for folks who might want to teach our littles (PreK-1st Grade) and Middles (2nd-6th Grade) for Sunday School. The education calendar can be found on the church website at: <https://www.bethlehemcf.org/education-calendar.html> If you are able to help, please email or call Pastor Amy. Thanks for helping our littles and middles learn about God and God's love for them!

Joyful Times will be headed to Floyd County Museum in Charles City on November 3. Cost for the tour is \$5. Current exhibits are Pioneer Hall, Legel's Drugstore, Model Trains, Tornado Alley, Tractors, a Local History Collection and much more! After the tour they will be having lunch at Pub on the Cedar.

For more information, talk to Jerry Mohling, or Linda Mixdorf.



Plans are being made to celebrate Bethlehem's anniversary with an organ concert and other fun happenings too! While plans are being finalized, make sure you **save the date of November 20th!** Bishop Kevin Jones will be joining us, and **we will celebrate both at worship in the morning, and at the concert and Anniversary recognition in the afternoon!** Let your friends know they aren't going to want to miss this!

Bethlehem will be having a Live Nativity on December 5 from 4:30-6pm. We are in need of many volunteers to help with the cast, kitchen help, and parking lot crew. We are making new costumes this year, and looking for both those who can help sew, and those who might help with financial donations. Thanks for all your support!



Youth

NEWS AND EVENTS



Have you heard??

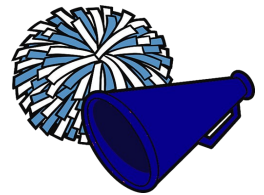
The Playground is open in the sanctuary!

Now if you are in pre-school or elementary school and need a break from sitting in the pew, there is a place just for you! Come check it out next time you are in church!



Blessing of the Pets is this Sunday, October 2 at noon! Bring your furry, finned, fanged or feathered friend for a blessing and picture!

Remember next Confirmation Class for 7-9 Graders is October 2. Come and join us at worship, and then stay after for learning about creation & hanging with your friends!



Don't forget to get a copy of your sports and concerts schedules to Pastor Amy. She would love a chance to cheer you on!



Calling all 12-15 year olds! The UNI Lock-In is back!

Grab your friends and come hang out at the WRC on UNI's campus! There is something for everyone from swimming to rockwall climbing to silent disco! **The Lock-In will be on Oct 20-21... from 7 pm to 6 am and it is gonna be awesome!** Be sure to sign up with Pastor Amy by October 1 to get the early bird rate of \$45 and a free t-shirt, or sign up by October 14 for \$60! We are also looking for an additional chaperone or two for this event. If you are willing to help, talk to Pastor Amy!



Educational Opportunities for All Ages

This month our Sunday Schoolers (PreK-6th Grade) will have class on the following days:

Oct 2- We will learn about the creation story and how God created all of us to care for one another!

Oct 9- We will learn the story of the grateful leper and how it is important to say thank you for our many blessings!



Bible Study Opportunities this Month:



Men's Bible Study Breakfast-Saturday, Oct 15 at 8:00 am at Bethlehem. Coffee, juice, and coffee cake will be served. They will be talking about the 95 Theses in honor of Reformation Day this month.

Wine, Women, and the Word-Thursday, Oct 27 at 6:30 at 1850 Patio and Grill. They will discuss the upcoming lectionary texts.

Calling all 7-9 Graders! This month we will gather at **10:15 am** on **Oct 2** to learn about the different creation stories in the Bible and **Oct 9** to learn about The Apostles Creed. Hope to see you there!

Calling all 10 Graders! We are so excited that your confirmation day is coming quickly! Don't forget that we will gather for your final Confirmation retreat on **October 9th at 3:00 pm**, and that we will celebrate your Confirmation in worship on **Sunday, October 30!**



Pastor Kristi is looking at starting a Grief Support Group soon. For more information on this, be sure to check out her article on the back of the calendar!



Fall is officially here. If you pay close attention, you can notice the colors changing on the leaves, the temperatures dropping, and the evidence of autumn tastes and smells. In this season, I am reminded of different seasons in our lives. Sometimes changing seasons in our lives are predicted and gradual, like retirement or the birth of a child. Other times they come upon us suddenly with a new diagnosis or a loss of a loved one. It is

part of the human experience to be confronted with grief and loss with each change. One of the ways we can be Christ to one another is to support each other through these transitions. At Bethlehem, I see this in the way the Care and Connect Team sends cards, in the way I am privileged to listen to people share their life experiences with me, and in the way many long-standing friendships of trust that have formed the Bethlehem community.

When we lose someone close to us, we never quite get over it, but we learn to integrate the loss into our lives and develop a "new normal." We do experience healing over time from the pain, though we will never been 100% cured. One of the ways we can support one another is accompanying each other on the grief journey and finding out that we are not alone as we move through the different stages of the grieving process. This is why I am developing a grief support group for people who are actively dealing with or struggling with the reality of loss in their lives. If you have lost a loved one recently and are looking for support and fellow people of faith to journey with you, this group is for you. If you are still healing from a complicated grief situation that lingers after significant time has passed, this group may also be for you. If you decide you need support for your grief, this is for you. If interested in learning more, you can send me an email at pastorkristi.grieder@gmail.com, or you can call the church office and leave a message for me and I will call you back as soon as I can. Once I know who might be interested in such a group, I will have more details available.

God's peace to you along the journey,

Pastor Kristi Grieder



Do you have an idea for a small group that you would like to get started?

Do you have a topic that you would like us to talk about at Adult Education?

Do you have a joy or concern that you would like to share? Do you just want someone to talk to? For whatever the reason, **come and chat with Pastor Amy on Wednesdays 10-Noon at Sarah's Espresso.**

Worship

WITH US ONLINE

Not able to join us for worship in person?

No problem! All of our worship services can be found online on our church website at:

<http://www.bethlehemcf.org/online-worship.html>



To add yourself to the prayer chain team:

Email Deb (office@bethlehemcf.net) or

call Deb at the church office (319-266-3541) and let her know that you would like to receive prayer chain emails.

To add a loved one to the prayer list:

Email Pastor Amy pastoramy@bethlehemcf.net or call Pastor Amy at the church office.



Do you wish someone could bring communion to you? **Call the church office and Pastor Kristi or Pastor Amy will be glad to bring communion to you!**

Call the office at 319-266-3541 and we will have communion brought to your residence. May God bless you and keep you today and always.



GIVING MADE EASY!

Scan the QR code with your smart phone to share your offering with Bethlehem.

BETHLEHEM STAFF

Church phone: 319-266-3541

Pastor Amy Eisenmann-Lead Pastor
Pastor Amy's cell phone: 218-290-3982
pastoramy@bethlehemcf.net

Deb Estrem- Office Manager
office@bethlehemcf.net

Heather Hurd-Schneider Director of Fellowship and Outreach
heather@bethlehemcf.net

Pastor Kristi Grieder-Visitation Pastor
pastorkristi.grieder@gmail.com

Noah Anderson-Worship Tech
worshiptechbcf@gmail.com

Brennan Regan-Choir Director
bregan99@uni.edu

Hudson Lourenço - Organist



2022-2023

CONGREGATION COUNCIL MEMBERS

Ellen Hermanson-President
319-573-0719

Kurt Leistikow -Vice President
319-269-7178

Joan Christiansen- Treasurer
319-269-5634

Connie Johnson-Secretary
319-610-7449

Reed Hunemuller: 319-277-6381

Mindy Fisher 319-290-4365

Mardy Holst 319-277-0328

Theresa Elverum 319-277-3306

Jill Schulte-319-290-5725

YouTube

Live streaming

Did you know you can now worship with us live??

When you aren't able to join us in person, we hope you will join us on **Sunday mornings at 9 am** on our YouTube page at:

<https://www.youtube.com/c/BethlehemLutheranCF>



This Sunday at Noon

Bring your furry, finned, fanged or feathered friends for a blessing and a picture! All animals and people are welcome to attend!



Events coming to Bethlehem this Fall/Winter:

**Nov 20, 3 pm: Church Anniversary Celebration and
Organ Concert with Hudson Lourenco and Friends**

Dec 11, Danish Brunch & Dance Around the Tree!

Our Pastor
Rev. Amy Eisenmann
(218) 290-3982 cell phone
(319) 266-3541 work phone
pastoramy@bethlehemcf.net

Our website:
www.bethlehemcf.org

Our YouTube Channel:
Bethlehem Lutheran CF

Our Facebook page:
**[www.facebook.com/
Bethlehem-Lutheran-Church-
ELCA-451552121584266](https://www.facebook.com/Bethlehem-Lutheran-Church-ELCA-451552121584266)**

Our Instagram page:
[@bethlehemcf](https://www.instagram.com/bethlehemcf)